

3. Using 2 ½" x 10 ½" strips and 2 ½" x 6 ½" strips, create top/bottom and side borders following the Border diagrams below. Add **G** and **K** 2 ½" x 7 ½" strips to either side of Top/Bottom borders. *Make 2 of each border.*

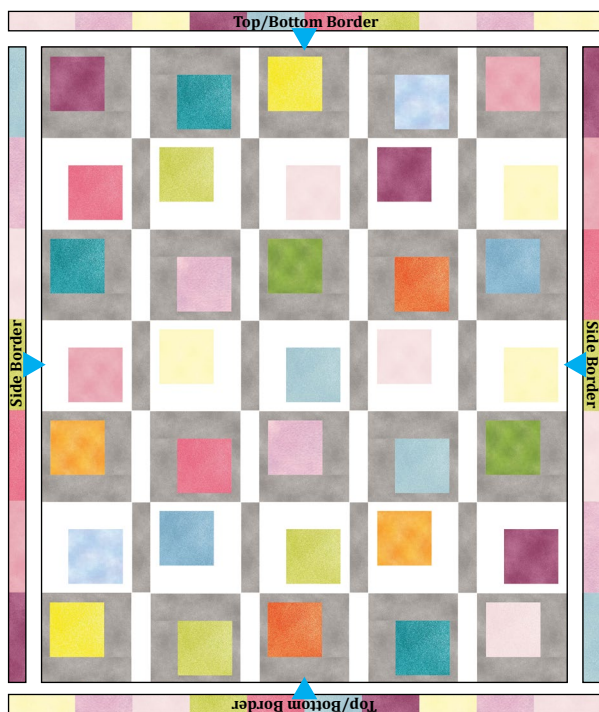


**Top/Bottom Border**  
*Make 2*



**Side Borders**  
*Make 2*

**Quilt Diagram**



Finished Size: 62" x 74"

*Note: If this Benartex pattern is included in a kit, any questions about the kit should be addressed to the vendor from whom you bought it.*

Share your finished quilt with the Benartex community  
on social media by tagging

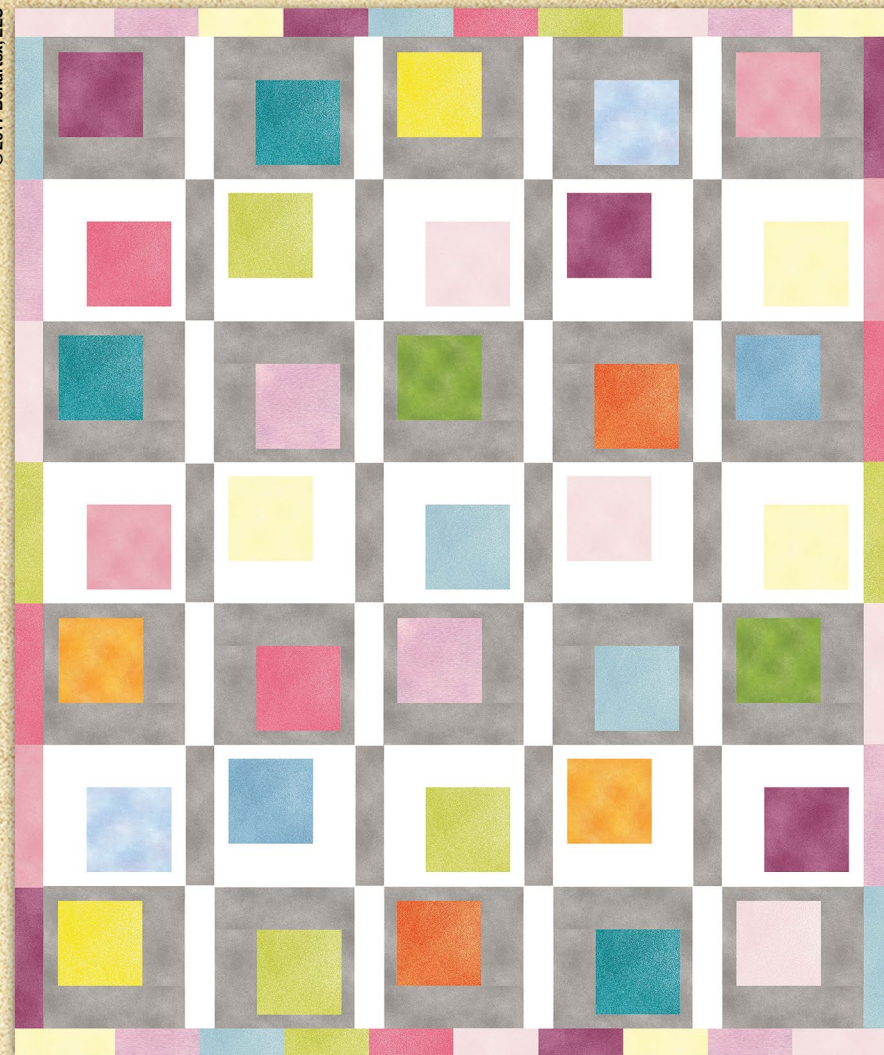
**#benartex\_fabrics!**



# Paint Box

Designed by Benartex Studios

© 2017 Benartex, LLC



We love the way this paintbox quilt sparkles with color and movement. The fresh design also leaves great opportunities to show off your quilting.

**SHADOW  
BLUSH**  
For Quilters

Uses Benartex's *Shadow Blush* collection  
by Benartex Studios  
Finished Size: 62" x 74"

**Benartex**  
Fabric for quilters. By quilters.

THE QUILT SHOWN IS A DIGITAL REPRESENTATION. ACTUAL FABRIC REPEATS WILL VARY FROM DESIGN SHOWN.



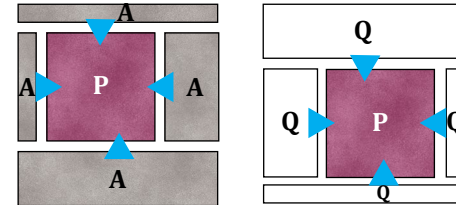
SAMPLE	KEY/SKU	QTY	CUT
	<b>A</b> Blush 2045-D <i>Fog</i>	2-1/8 yds	(9) 1 1/2" WOF strips, subcut, (20) 1 1/2" x 6 1/2" strips (20) 1 1/2" x 10 1/2" strips (4) 2 1/2" x WOF strips subcut, (12) 2 1/2" x 10 1/2" strips; <i>Sashing</i> (9) 3 1/2" x WOF strips, subcut, (20) 3 1/2" x 6 1/2" strips (20) 3 1/2" x 10 1/2" strips
	<b>B</b> Blush 2045-J <i>Grass Green</i>	1 FQ	(2) 6 1/2" squares
	<b>C</b> Blush 2045-P <i>Grape Green</i>	1 FQ	(3) 6 1/2" squares (2) 2 1/2" x 10 1/2" strips (2) 2 1/2" x 6 1/2" strips
	<b>D</b> Blush 2045-S <i>Caribe</i>	1 FQ	(3) 6 1/2" squares
	<b>E</b> Blush 2045-T <i>Sky Blue</i>	1 FQ	(2) 6 1/2" squares
	<b>F</b> Blush 2045-08 <i>Lt. Turquoise</i>	1 FQ	(2) 6 1/2" squares (2) 2 1/2" x 10 1/2" strips (2) 2 1/2" x 6 1/2" strips
	<b>G</b> Blush 2045-09 <i>Baby Rose</i>	1/3 yd	(3) 6 1/2" squares (2) 2 1/2" x 10 1/2" strips (2) 2 1/2" x 7 1/2" strips (2) 2 1/2" x 6 1/2" strips
	<b>H</b> Blush 2045-10 <i>Rose</i>	1 FQ	(2) 6 1/2" squares (2) 2 1/2" x 10 1/2" strips
	<b>I</b> Blush 2045-24 <i>Carnation</i>	1 FQ	(2) 6 1/2" squares (2) 2 1/2" x 10 1/2" strips (2) 2 1/2" x 6 1/2" strips
	<b>J</b> Blush 2045-28 <i>Lemon</i>	1 FQ	(2) 6 1/2" squares
	<b>K</b> Blush 2045-30 <i>Pale Yellow</i>	1 FQ	(3) 6 1/2" squares (2) 2 1/2" x 7 1/2" strips (2) 2 1/2" x 6 1/2" strips.
	<b>L</b> Blush 2045-37 <i>Mango</i>	1 FQ	(2) 6 1/2" squares
	<b>M</b> Blush 2045-39 <i>Orange</i>	1 FQ	(2) 6 1/2" squares
	<b>N</b> Blush 2045-57 <i>Powder Blue</i>	1 FQ	(2) 6 1/2" squares
	<b>O</b> Blush 2045-60 <i>Lilac</i>	1 FQ	(2) 6 1/2" squares (2) 2 1/2" x 10 1/2" strips (4) 2 1/2" x 6 1/2" strips.
	<b>P</b> Blush 2045-63 <i>Plum</i>	1 FQ	(3) 6 1/2" squares (2) 2 1/2" x 10 1/2" strips (2) 2 1/2" x 6 1/2" strips
	<b>Q</b> Colors For Quilters 3000H-09 <i>White</i>	1-1/3 yds	(7) 1 1/2" x WOF strips, subcut, (15) 1 1/2" x 6 1/2" strips (15) 1 1/2" x 10 1/2" strips. (5) 2 1/2" x WOF strips, subcut, (16) 2 1/2" x 10 1/2" strips; <i>Sashing</i> (7) 3 1/2" x WOF strips, subcut, (15) 3 1/2" x 6 1/2" strips. (15) 3 1/2" x 10 1/2" strips.

WOF = WIDTH OF FABRIC | \*SEW STRIPS VIA SHORT ENDS

*This colorful quilt is really made with just one block! The varied look is achieved by alternating colors and alternating the direction of the block. Each row has five blocks-see diagram below. There are 4 sashing strips in each row, and they alternate from white to gray. (Start row one with white).*

#### BLOCK ASSEMBLY:

1. Sew (1) **A** or **Q** 1-1/2" x 6-1/2" and 3-1/2" x 6-1/2" strip to either side of (1) 6-1/2" square. Then sew (1) **A** or **Q** 1-1/2" x 10-1/2" and 3-1/2" x 10-1/2" strip to top and bottom of 6-1/2" square following the diagrams below. Square to 10-1/2".



#### QUILT CENTER ASSEMBLY:

2. Sew together all the **BLOCKS**, following fabrics from the diagrams below. Then sew together blocks in rows using **A** or **Q** 2-1/2" x 10-1/2" sashing strips in between each block following the diagrams below.

ROW 1									
ROW 2									
ROW 3									
ROW 4									
ROW 5									
ROW 6									
ROW 7									